

November 3, 4, 5 -

MUSKET presents: *EVITA*
at the Power Center for the Performing Arts

November 4 -

M-FLICKS presents: *PINK FLOYD'S THE WALL*
Midnight at the State Theater (State Theater Prices)

November 10 -

M-FLICKS presents: *TRAINSPOTTING*
7:00 p.m. & 9:00 p.m. Natural Science Auditorium

November 17, 18, 19 -

THE RUDE MECHANICALS present: *HAMLET*
Friday & Saturday 8:00 p.m., Sunday 2:00 p.m., Mendelsshn Theater
\$6 / students, \$8 / others, MUTO, 763-TKTS

November 30 -

LAUGHTRACK presents: *ANDY DICK*
8:00 p.m. Michigan Theater

December 1 -

M-FLICKS presents:
*ROSENCRANTZ AND
GUILDENSTERN ARE DEAD*
7:00 p.m. & 9:00 p.m. Natural Science Auditorium

December 2 -

M-FLICKS presents: *PINK FLAMINGOES*
Midnight at the State Theater (State Theater Prices)

December 8 -

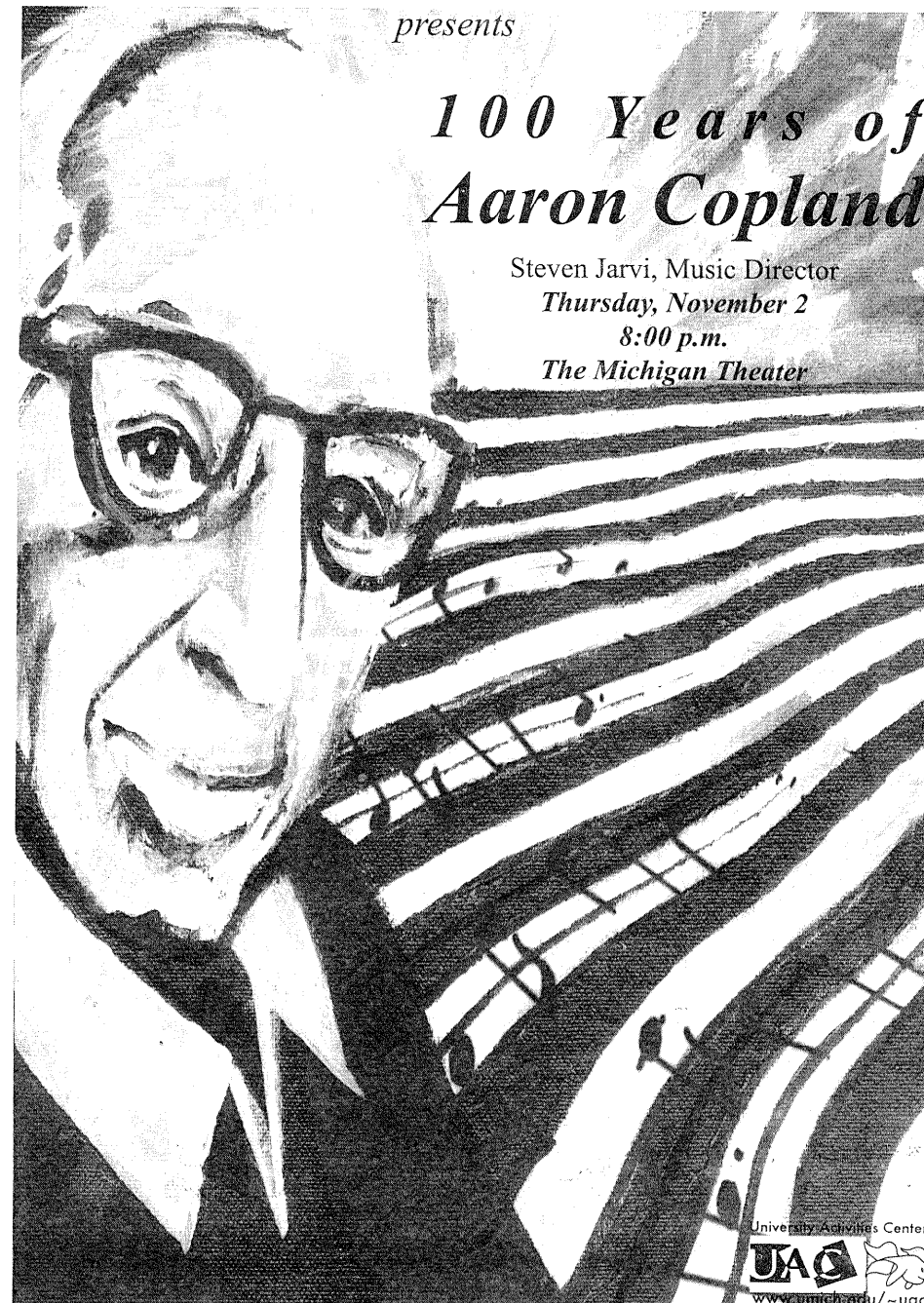
AMAZIN' BLUE FALL CONCERT
\$7, 8:00 p.m. Michigan Theater

MICHIGAN **Pops** ORCHESTRA

presents

*100 Years of
Aaron Copland*

Steven Jarvi, Music Director
Thursday, November 2
8:00 p.m.
The Michigan Theater



Talent Wanted - Talent Wanted - Talent Wanted

THE STATE STREET POETRY PROJECT

A committee of the University Activities Center (UAC) is looking for performers for our upcoming events. The goal of SSPP is to provide a medium for prospective writers, poets, actors and singers to showcase their original works.

WANTED:

Interested writers, poets, actors and singers

CONTACT INFO:

Victoria Huang - Committee Chair of the State Street Poetry Project

Email: vhuang@umich.edu

Phone: 763-1107 (UAC office, please leave a message)

In Person: Office Hours Tuesdays 3-5 pm

UAC Office, 4002 Michigan Union

Talent Wanted - Talent Wanted - Talent Wanted

AIESEC Michigan



Want to Intern Abroad & Get Paid?

Pick a Country:

- India
- Columbia
- Germany
- France
- Mexico
- China
- Turkey
- Brazil

& much more!

Info Sessions:

Thursday, Oct 19th 7:00 PM

Thursday, Nov 9th 7:00 PM

Room D1273 Business School

MICHIGAN Pops ORCHESTRA

Steven Jarvi, Music Director

November 2, 2000

Michigan Theater

All Works Composed By Aaron Copland (1900-1990)

Fanfare for the Common Man

Selections from "Rodeo"

Corral Nocturne

Saturday Night Waltz

Hoe-Down

Selections from the "Old American Songs"

Simple Gifts

The Dodger

Long Time Ago

Ching-A-Ring Chow

The Little Horses

I Bought Me a Cat

At the River

Dean Daniel Washington

--- INTERMISSION ---

Appalachian Spring Suite

Selections from "The Tender Land"

Laurie's Song

Kathryn Alexander

The Promise of Living

Kathryn Alexaner, Betsy Williams, Thomas Glenn,

Tyler T. Oliphant, Dean Daniel Washington

NEW CD!

Amazin blue

CONTEMPORARY A CAPPELLA

is...

RAISING THE BAR

The University of Michigan's nationally-renowned a cappella group brings you its finest work yet! Get yours today.

For info:
www.amazinblue.org

EVITA

Music by Andrew Lloyd Webber

Lyrics by Tim Rice

\$7 Students with ID/Seniors
\$12 Adults

November 3 & 4
8:00 pm
November 5
2:00 pm

Tickets available at the
League Ticket Office:
(734) 764-0450

Power Center for the
Performing Arts
Ann Arbor, Michigan

MICHIGAN Pops ORCHESTRA

Violin

Elizabeth Bakalyar
Jennifer Chang
Michael Chang
Anand Christopher
Emily Harris
Adrienne Jacobs **
Sarah Korth
Dylana Leung
Petro Lisowsky
Emilia Metenbrink *
Jenny Sarkela
Cynthia Shen
Jane Terzibashian
Vanessa Troiani
Michelle Wu

Viola

Devorah Tovah Matthews *
Melissa Wu

Cello

Paul Dobryden
Lisa Van Every
Avi Friedlander *
Sonali Rajan
Julia Stojak
Rebecca Yeh
Courtney Young

Double Bass
Molly Doernberg

Flute

Alison Ham
Erin Kendall *
Michelle Spindler

Oboe

Courtney Casper *
Cori Richards

English Horn

Abby Rahn

Clarinet

Jen Driskill
Emily Haraburda
Cheryl Melfi *
Nicoleen Nieman

Bassoon

Natalia Drelichman
Steve Goetz
Kari Nordgren *

Horn

Katy Ambrose
Bryan Barnes
Darcy Hagadorn
Rachel Parker *

Trumpet

Robert P. Cohen
Brian Drake *
Ryan Guidry
Dave Ostreicher

Trombone

Jeff Balcerski
Garrett Mendez
Nick Phil *

Tuba

Charlie Meldrum

Percussion

Gordon Berman
Maureen Marcusse
Anthony Parolari
Steven Skripnik

Piano

Adam Casini

Stage Manager

Benjamin Huisman

** Concertmaster
* Principal

Hamlet

*"Something is rotten
in the state of
Denmark..."*

November 17 & 18th, 8pm
November 19, 2pm
Lydia Mendelssohn Theater
Michigan League

The
RUDE
Technical

BLIMPYBURGERS ARE A QUINTESSENTIAL

MICHIGAN TRADITION



663-4590 SSI S.DIVISION

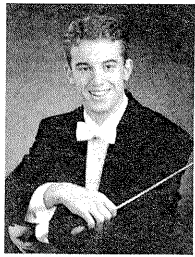
EXPERIENCE THAT CRAZY BURGER FOR YOURSELF

Copland's Comments on "Appalachian Spring Suite"

"Appalachian Spring" was first performed in 1944 as a complete ballet for Martha Graham and her dance company. A year later, Copland arranged the "Appalachian Spring Suite" for orchestra. Below are the sections Copland designates to the piece in his original program notes. These eight sections are linked into a continuous whole. The following are his words:

1. Very slowly. Introduction of the characters, one by one, in a suffused light.
2. Fast. Sudden burst of unison strings in A-major arpeggios starts the action. A sentiment both exalted and religious gives the keynote to this scene.
3. Moderate. Duo for the bride and her Intended - scene of tenderness and passion.
4. Quite fast. The revivalist and his flock. Folksy feelings - suggestions of square dances and country fiddlers.
5. Still faster. Solo dance of the Bride - presentiment of motherhood. Extremes of joy and fear and wonder.
6. Very slowly (as at first). Transition scenes reminiscent of the introduction.
7. Calm and flowing. Scenes of daily activity for the Bride and her Farmer-husband. There are five variations on a Shaker theme. The theme, sung by a solo clarinet, was taken from a collection of Shaker melodies compiled by Edward D. Andrews, and was published later under the title 'The Gift to be Simple'. The melody I borrowed and used almost literally is called 'Simple Gifts'.
8. Moderate. Coda. The Bride takes her place among her neighbors. At the end the couple are left 'quiet and strong in their new house.' Muted strings intone a hushed, prayer-like passage. We hear a last echo of the principal theme by a flute and solo violin. The close is reminiscent of the opening music.

Our Music Director



Steven Jarvi feels privileged to return as the Music Director of Michigan Pops for his second season. Steve began his conducting career at the age of 17 as an Assistant Conductor for the West Shore Symphony Orchestra. Since then he has gone on to conduct all genres of music. He appeared in 1998 as the Music Director of the Gilbert and Sullivan Society's production of *Patience*, as well as a Guest Conductor of the U of M's Arts Chorale. Orchestral conducting took him overseas to the Czech Republic where he was the only American to participate in the Marienbad International Workshop and appeared as Guest Conductor with the West Bohemian Symphony Orchestra. In April of 2000, Jarvi traveled on scholarship to Salzburg, Austria for a week of study and observation with Claudio Abbado, Sir Roger Norrington and the Berlin Philharmonic at the Salzburg Easter Festival. Along with his current duties at the Pops, Jarvi is the Music Director at the First United Methodist Church of Ypsilanti and is a Production Supervisor for the University Musical Society.

Steve is a senior pursuing a BM in Music Theory and Conducting through the Artist and Scholars Honors Program. He has had the opportunity to work and study with many talented musicians including Murray Gross, Harold Farbermen, Johanness Schläfli, Katherine Collier, Marianne Ploger, Jimmy Wimer, Jerry Blackstone, Martin Katz, and Kenneth Kiesler.

Our Soloists



Daniel Washington, a native of Summerville, South Carolina, has sung in many of the world's leading opera houses. He has sung Amonsaro in *Aida* at the Stadttheater Saarbrücken, Jokanaan in *Salome* at the Teatro Massimo, Escamillo in *Carmen* and the title role in *Simon Boccanegra* at the Stadttheater Luzern. He created the role of Steven Biko in the world premiere of the opera *Biko* in Birmingham, England for the Royal Opera's Garden Venture Project. Mr. Washington has won many awards, including the First Prize in the International Voice Competition of Toulouse and the First Prize in the International Competition of Lyric Singing of Verviers.

Highlights from his career include his Royal Opera Covent Garden debut in *Die Frau ohne Schatten* conducted by Bernard Haitink and singing the title roles in *Der Fliegende Holländer* and *Don Giovanni* at the Stadttheater Hof. Daniel Washington made his debut as Porgy in the highly acclaimed 1993 production of *Porgy and Bess* directed by Gotz Friedrich. On television, he has appeared in internationally broadcast concerts including a benefit concert for UNICEF as well as a concert version of *Porgy and Bess* with the Berlin Philharmonic conducted by Sir Simon Rattle. He also appears in the film of the Glyndebourne production of *Porgy and Bess* and as Tom in Gershwin's *Blue Monday Blues* for Swiss television.

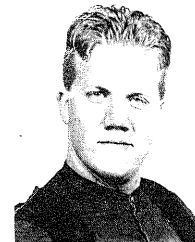
Our Soloists (Continued from previous page)



Kathryn Alexander is a second year master's student at the University of Michigan with highly esteemed professor Lorna Haywood. In the last two years at Michigan, she has appeared as Gabriel in *Haydn's Creation* with the USO, soloist in Mendelssohn's *Midsummer Night's Dream*, and is currently performing as Romilda in Handel's *Xerxes*, as well as the role of Nanetta in this fall's opera, *Falstaff*, under the direction of Joshua Major and Martin Katz. Some of her roles at Millikin include Marie, in the *Bartered Bride*, Laurie in the *Tenderland*, Mrs. Wordsworth in *Albert Herring*, and at Inspiration Point she was privileged enough to perform the role of Pamina under Carroll Freeman, where she earned the "best female young artist award".



Thomas Glenn hails from Calgary Alberta, Canada. As a masters student in voice, he has appeared in the University of Michigan's productions of *Susannah* as Elder Hayes, *Daughter of the Regiment* as Tonio, and will appear in this season's *Falstaff* as Bardolfo. Also to his credit are the roles of Evangelist in the *St. Matthew* and *St. John Passions*. He has appeared with the *Wasatch Baroque Players*, and was an apprentice artist with *Central City Opera* in the summer 2000 season. Thomas loves sushi, French literature, rock climbing and international politics.



Tyler T. Oliphant is originally from Salt Lake City, Utah where he received his undergraduate degree from the University of Utah. He is currently pursuing his masters at the University of Michigan. Recent Opera performances include: *La Fille du Regiment*, *Susannah*, *The Magic Flute*, *Così Fan Tutte*, *Turandot*; he is currently playing the title role in *Falstaff* with the University Opera Department. Tyler spent this summer studying and participating in the Carmel Bach Festival. He has performed in Handel's *Messiah*, Mozart's *Requiem*, Bach *Cantata's 56 and 194*, as well as a few contemporary chamber pieces.

Betsy Williams is a senior Vocal Performance major at the University of Michigan, studying with Shirley Verrett. She has appeared in numerous University productions including *La Traviata*, *The Magic Flute*, *Dido and Aeneas* and *Susannah*.

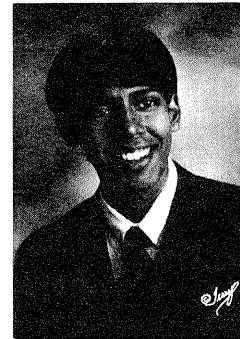
A Shake Your Big Wank Production
ALMOST FUNNY
A Sketch and Improvisational Comedy Epic

OCTOBER 26, 27 & 28 8:00 P.M. MICHIGAN UNION U-CLUB

\$5/\$3 W/ STUDENT ID • TICKETS AT MUTO, TICKETMASTER, OR 763-TKTS

DAN ABELSON ERIN BAHL BRIAN CHIANG AL DAVIS MARK HOFFMAN COREY JOHNSON
MIKE LEE ELLEN PUTNEYMOORE MAXWELL MURPHY DAN NIEMAN CLAY SHAKER
NATE SHAKER MICHELLE SLONIM JEFFREY WANK WILLIE WEISSBAUM AND JP ZAMMIT
HEAD WRITERS JOHN HARIG PAUL MALEWITZ AND DAN SCHIMPF

Our Executive Director



Anand Christopher is a senior in the School of Business Administration and is concentrating in accounting and finance. Anand has studied violin with Rebecca Ansel, a doctoral student at U of M's Music School and has performed in a variety of chamber ensembles on campus. This is Anand's seventh concert performing in the Michigan Pops Orchestra. In addition to his role as Executive Director, Anand is also on the UAC General Board and acts as a liaison between the two groups.

Our Program Director

Dave Ostreicher is a fifth year student dual enrolled in the College of Engineering as an Industrial/Operations Engineering student and the College of Literature, Science, and Arts as a Japanese concentrator. This is Dave's 5th year back with the Pops in one way, shape, or form. He was forced to take a break from the orchestra for the 1998-1999 season while he studied and worked in Japan for a year. Now, Dave is back in the Pops (and probably will be for quite sometime) as a member of the Board and a member of the trumpet section. Dave hopes you enjoy the concert, this program, and life in general.

Our Advertising Director

Steve Skripnik is a freshman in the College of Engineering and a member of Michigan Pops percussion section. Steve has been studying percussion for the eight years and has performed with the Grand Rapids Youth Symphony for the past three years. This is Steve's first season with the MPO and first year as publicity manager. Steve also performs with the U of M Campus Band and helps with his high school marching band.

Andy Dick

CIRCUS OF FREAKS

Thursday, November 30

8:00 pm at the Michigan Theater, 603 E. Liberty, Ann Arbor
 Tickets \$20/\$15 with UM Student ID • laughtrack@umich.edu
TICKETS AT MICHIGAN UNION TICKET OFFICE (734) 763-TKTS AND AREA REVENUE OUTLETS (734) 942-6064

HOW TO BECOME A MEMBER OF THE MICHIGAN POPS ORCHESTRA

Are you a musician interested in performing movie, musical, rock-and-roll and classical music? Do you like the production aspect of shows, such as lighting and sound? Are you an organized person interested in helping manage an orchestra?

If you answered "yes" to any of the above, then we are looking for you! Musicians of all skill levels are encouraged to contact us. We are interested in qualified persons to help both on stage and off. We are looking for qualified stage managers, who run the lights, sound and all other back stage production issues. The Michigan Pops Orchestra also has a governing Board of Directors. Responsibilities include program production, publicity, finance, librarian and secretary. Participation in the orchestra is not required to help out on the Board. Members can be from any school here at U of M - undergraduates, graduate students, faculty, staff, or alumni.

If you are interested in more information about opportunities to participate in the Michigan Pops Orchestra, please contact us at:

UAC - Michigan Pops Orchestra
 4002 Michigan Union, Box 541
 Ann Arbor, MI 48109-1349

(313) 763-1107
 Anand Christopher, Executive Dir.
aschrist@umich.edu

THE U OF M GILBERT AND SULLIVAN SOCIETY PRESENTS

GILBERT & SULLIVAN'S THE SORCERER

LYDIA MENDELSSOHN THEATRE
 NOV. 30 - DEC. 2 AT 8 PM
 DEC. 2 & 3 AT 2 PM

UMGASS 2000
 ZINN

FOR TICKETS, CALL 764-0450
 AFTER OCTOBER 31 OR VISIT THE
 MICHIGAN LEAGUE BOX OFFICE
www.umich.edu/~umgass