



M | MUSEUM OF NATURAL HISTORY
UNIVERSITY OF MICHIGAN

Phytoplankton

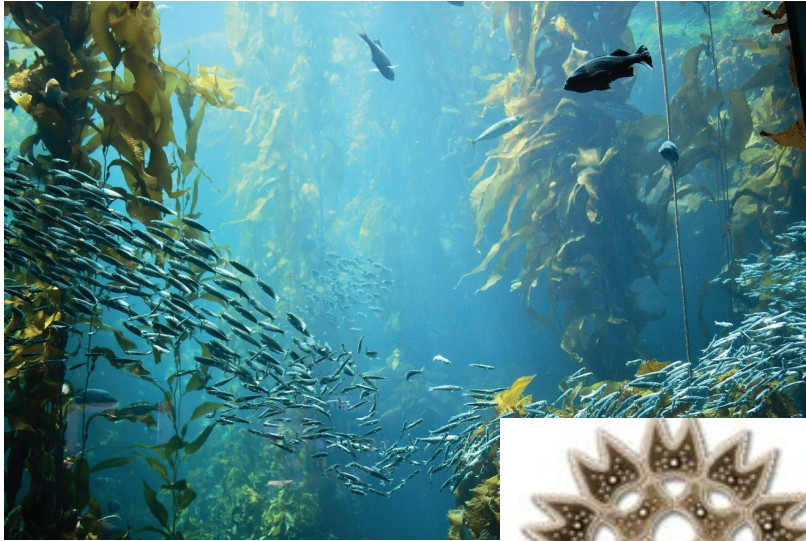


Phytoplankton grow everywhere - even the Antarctic. What do phytoplankton look like?



Phytoplankton - Tiny floating plant-like organisms

Algae



Diatoms



Phytoplankton - Tiny floating plant-like organisms

Dinoflagellates



Cyanobacteria



Phytoplankton aren't really plants. What are they missing?



Cyanobacteria



Diatoms



Dinoflagellates

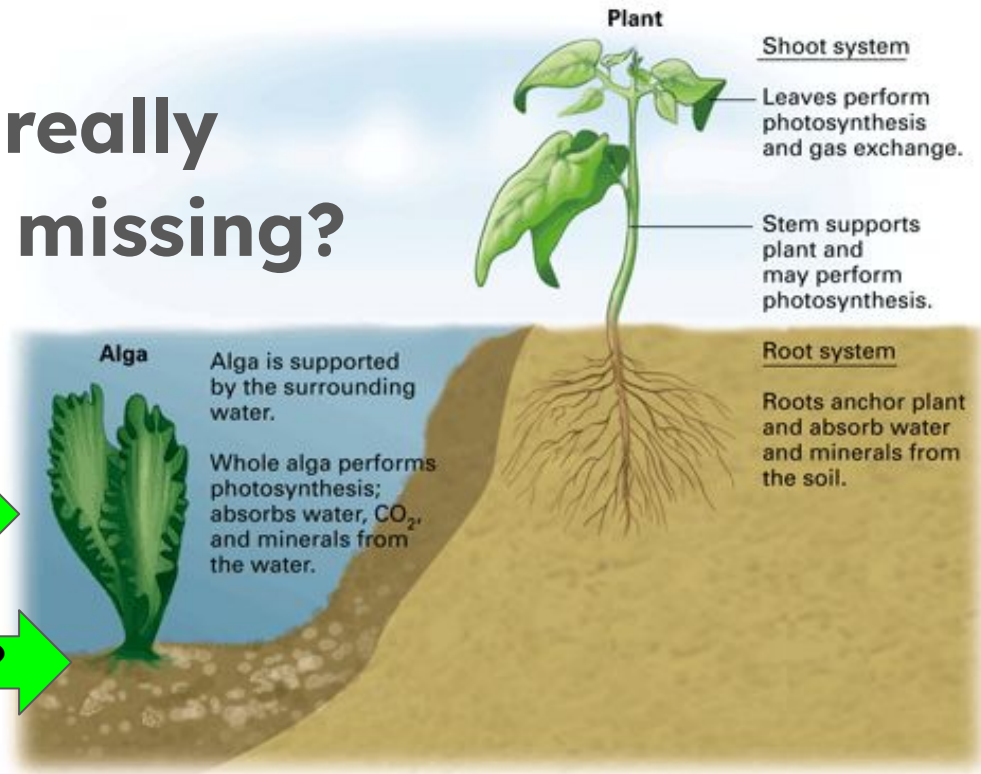


Algae

Phytoplankton aren't really plants. What are they missing?

Not "true" stems

Why can't phytoplankton have roots?

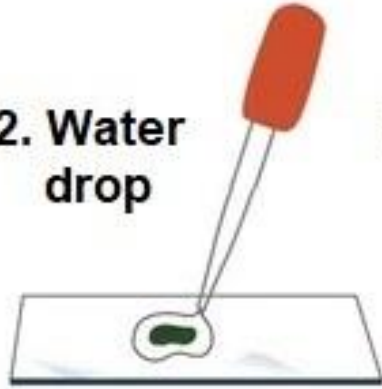


Make a Slide

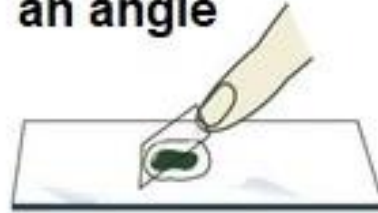
1. Place item
on slide



2. Water
drop



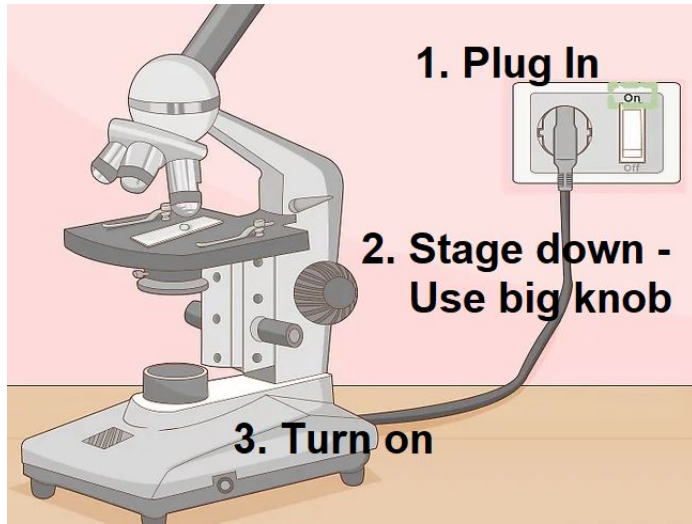
3. Coverslip on
an angle



4. Absorb
water



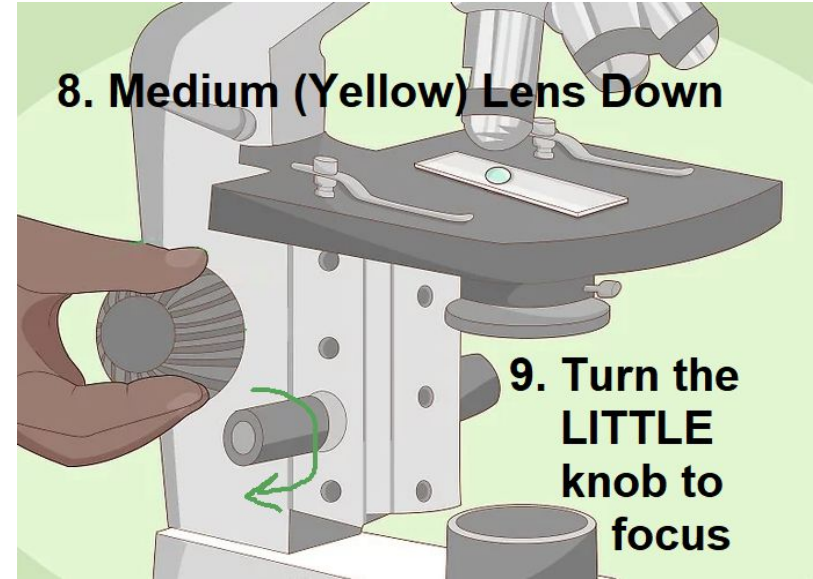
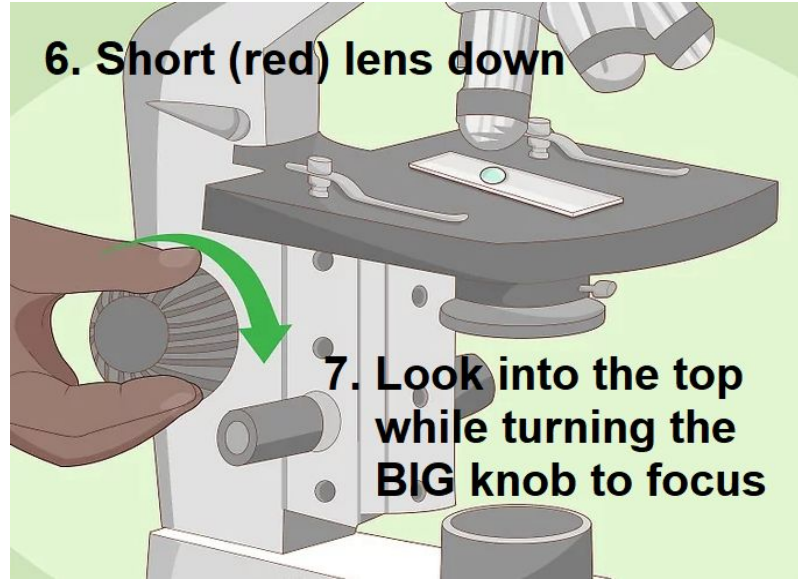
Setting Up the Microscope



Placing the Slide on the Microscope



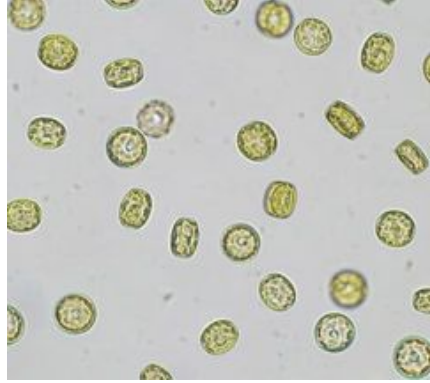
Seeing Clearly Through the Microscope Zooming In



Which Phytoplankton Do You See?



Amphidinium
Dinoflagellate



Cyclotella
Diatom



Thalassiosira
Diatom



Plankton come in all
shapes and sizes

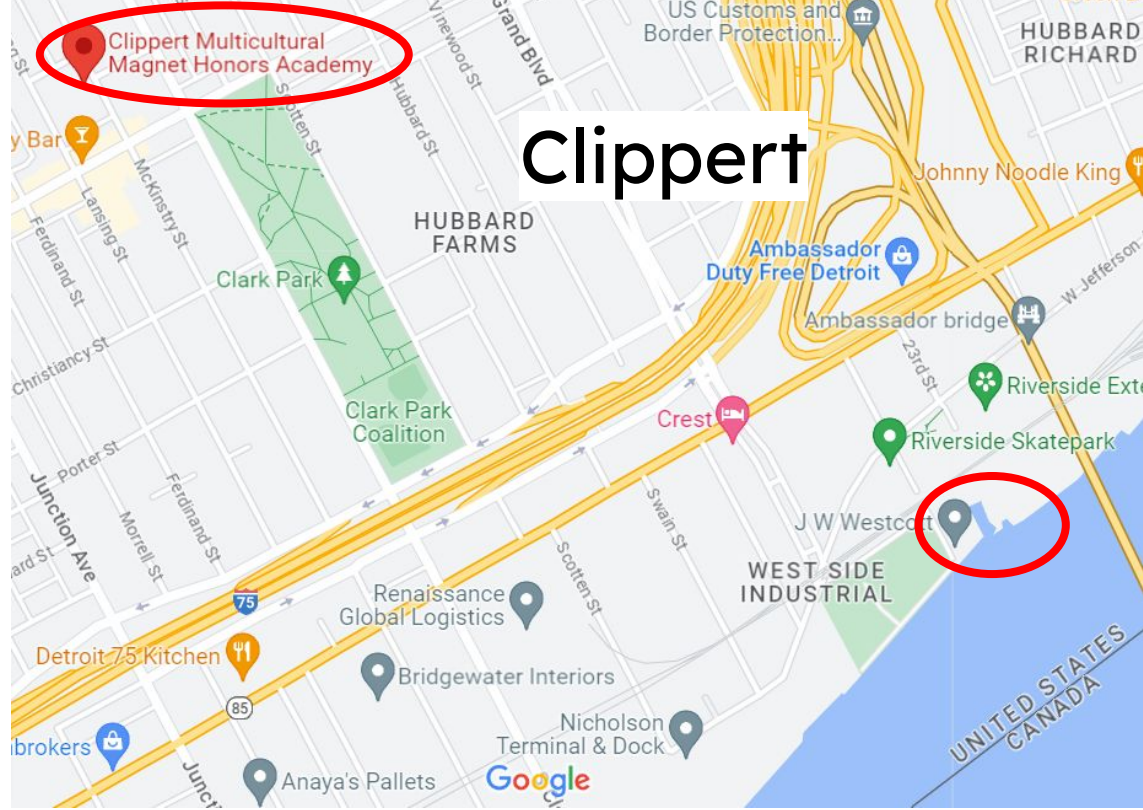
You don't need to go to the Antarctic or anywhere fancy to find phytoplankton

This sample is from your school's local waterway



You don't need to go to the Antarctic or anywhere fancy to find phytoplankton

This sample is from your school's local waterway

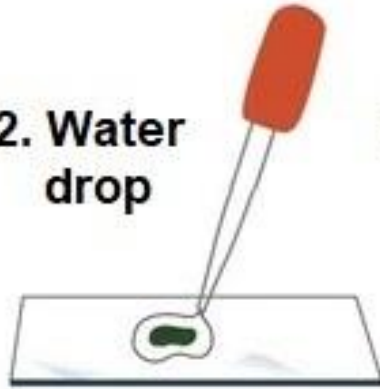


Make a Slide

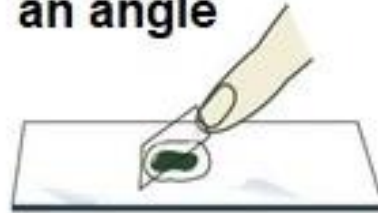
1. Place item
on slide



2. Water
drop



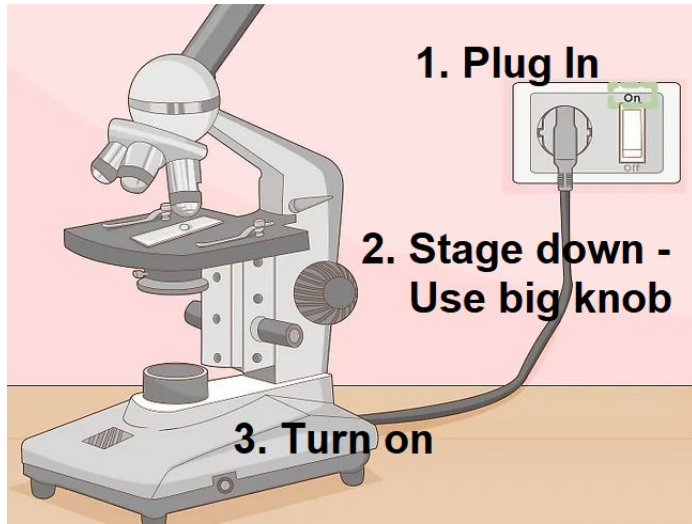
3. Coverslip on
an angle



4. Absorb
water



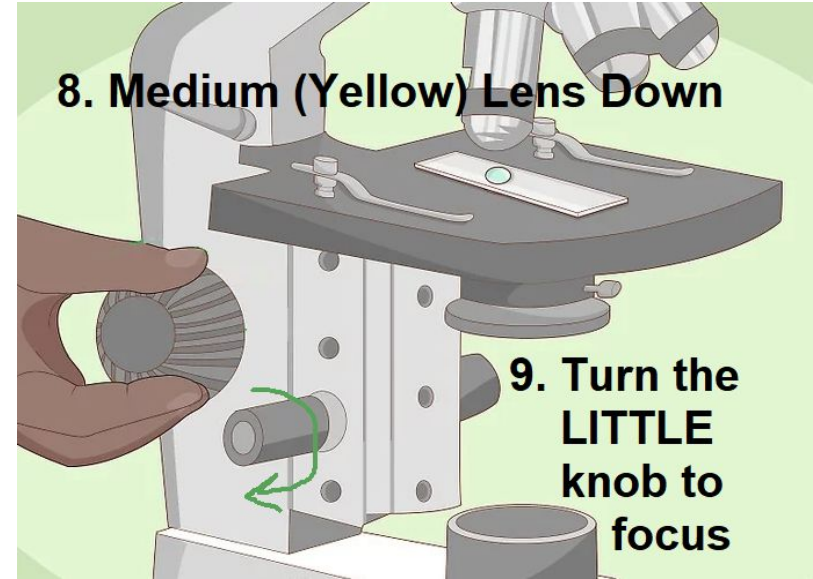
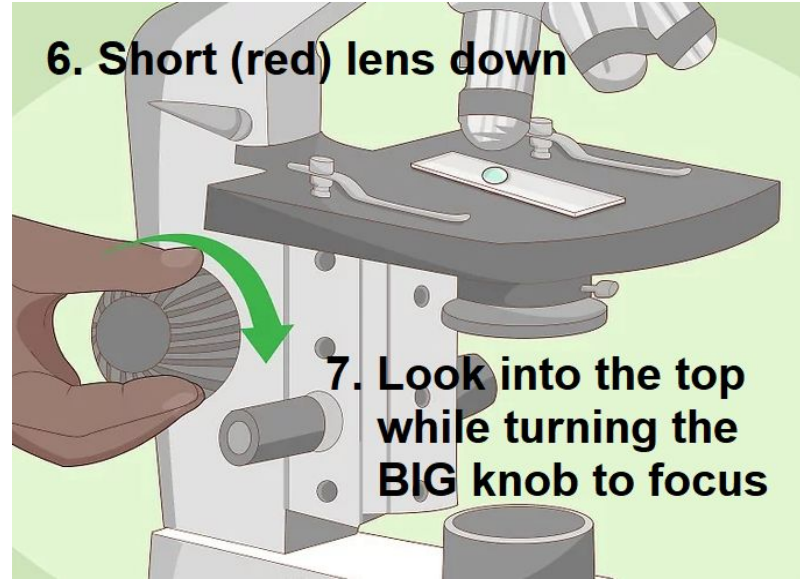
Setting Up the Microscope

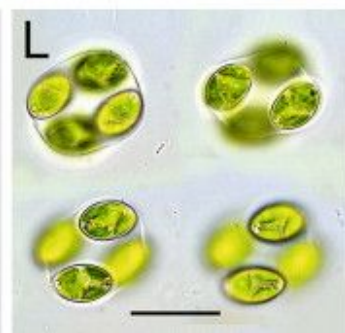
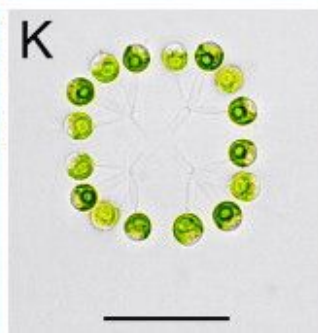
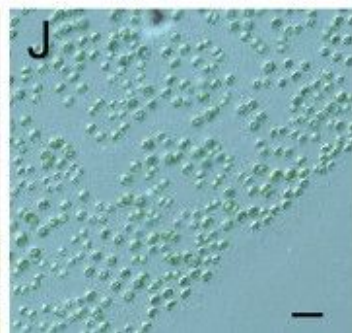
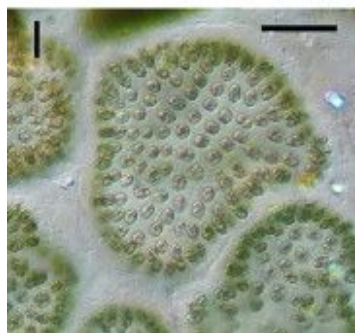
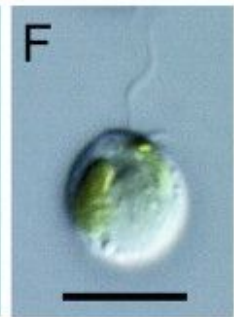
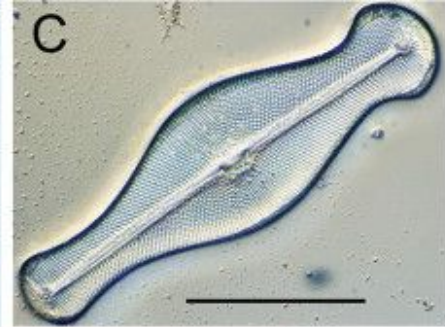
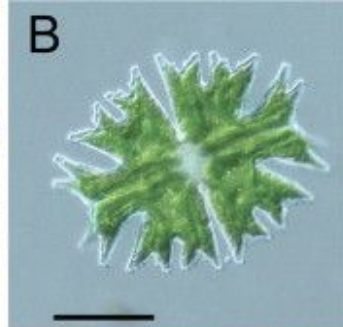
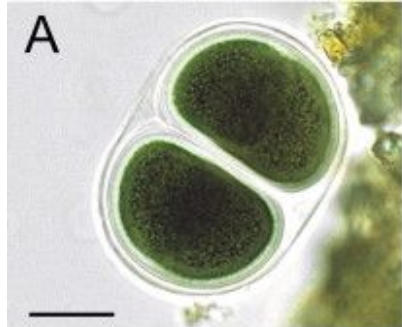


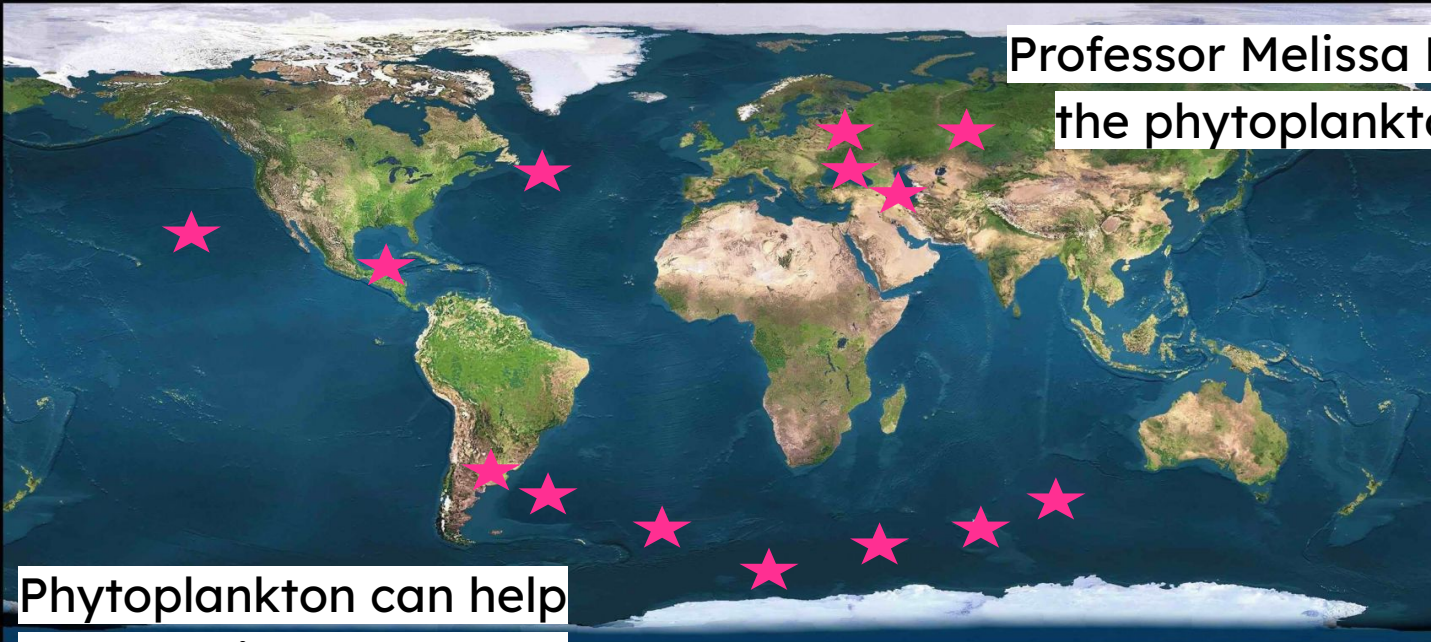
Placing the Slide on the Microscope



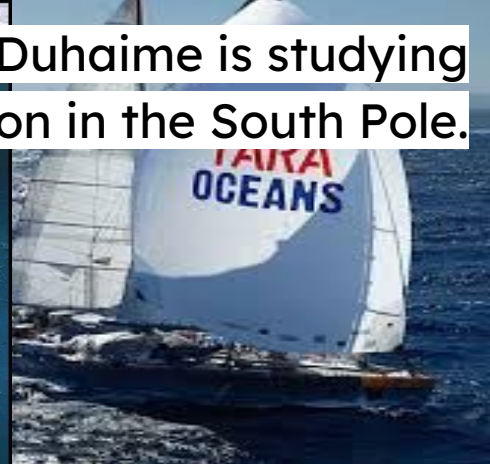
Seeing Clearly Through the Microscope Zooming In







Professor Melissa Duhaime is studying the phytoplankton in the South Pole.



Phytoplankton can help us slow climate change.





How can we quickly
grow phytoplankton to
help our fight against
climate change?



M | UMMNH