



THE UNIVERSITY OF MICHIGAN FACULTY WOMEN'S CLUB
1921-1996

AN ANNIVERSARY QUILT

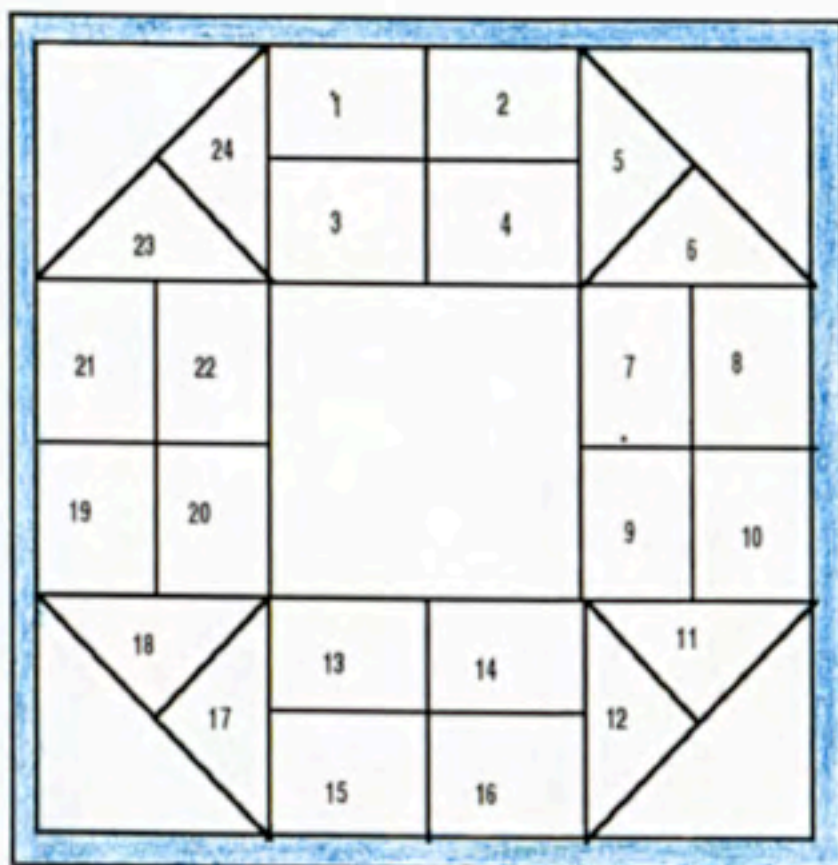


In the spring of 1995, seeds of inspiration were sewn when Helen Birdsall and Gwen Stevens suggested that the Quilting Section make something for the upcoming Faculty Women's Club seventy-fifth anniversary.



A design committee, chaired by Garland Lewis, was formed in the fall of 1995. Garland, Nancy Aupperle, Helen Birdsall, Annette Hansen, Jane Hughes, Angie Miller, Joan Rutherford, and Doris Weintraub met during that winter and spring. After many discussions and draftings, one of Joan's designs was selected.

Garland investigated possible campus locations for displaying the quilt.. The Michigan League was chosen, location of some of the FWC's first meetings and current large group activities.



The quilt is seventy-five inches square in size, with an internal octagonal shape containing twenty-four segments depicting a representation of the FWC's past and present activities. The segments surround an area which is a "whole cloth" quilted view of the side of the League facing the Burton Bell Tower. Logos of the League and the FWC occupy the four corner triangles. Fabric was chosen to complement the color scheme of the Founders' Reading Room/Alcove located on the main floor, and the inner octagonal shape echoes the coved ceiling of the room.

Instructions and fabric were distributed to quilting members in May, 1995. Individuals chose a segment and then used either original or traditional quilt patterns to depict with forethought and humor a specific club activity.

Summer travel plans resulted in one square being pieced in China and another in Rhode Island. All the squares were completed by August, admired, and then arranged appropriately.





Doris, Garland, and Joan assembled the quilt top with the enthusiastic assistance of Doris's cat and dog.





The quilt top was basted at the September 9th meeting.





In the months following the basting, individuals began quilting. Some squares were pieced and quilted by the same person. Other squares were pieced and/or quilted by several pairs of hands.

Many construction techniques were used in the quilt:
 machine, hand and paper piecing
 various types of embellishments
 machine and hand quilting
 applique





Special thanks to: Nancy Bishop for quilting the sashing strips, attaching the top sleeve, and writing the video script; Barb Kilbourn for quilting the center square and Sue Ullrich and Doris Weintraub for quilting the logos; Jeanne Muller for hemming the binding; Alida

Silverman for taking photos and providing the space for us to stretch and baste; Bill Lewis for enlarging and embellishing a drawing of the League for the center square. Garland Lewis not only adapted the four logos, sewed on the binding, the bottom sleeve and label, and coordinated all of the arrangements with the Michigan League, but also graciously continued to coordinate construction of the quilt throughout the entire process, providing continuity and encouragement during the sometimes overwhelming project.





FABRICS

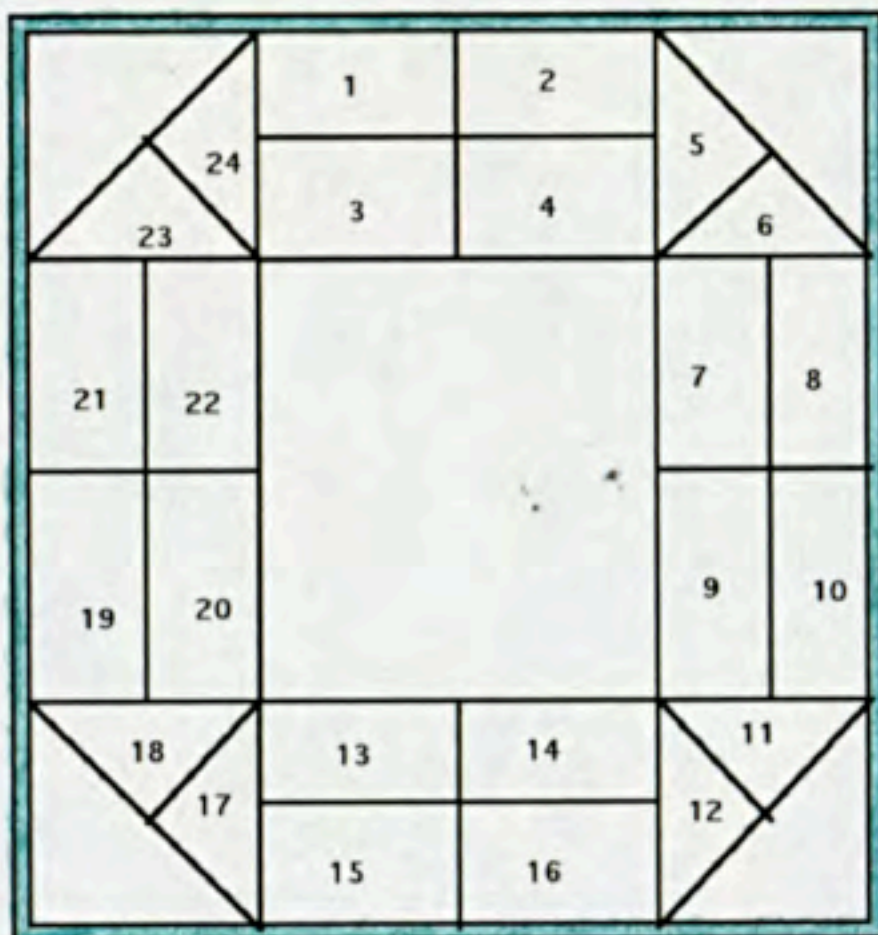
Cream: RJR Smithsonian, Classical Script (#2303)
The Copp Family Quilt Collection - late 18th century

Blue: RJR Jinny Beyer (#2346) color 2

Dark Aqua: Benartex, Country Threads (#467) color 5

Dark Rust: Benartex, Country Threads (#461)

Rust: Hoffman, Batique, Barn Red



1. **SOCIAL ACTIVITIES** (Jean)
traditional design: Tea Cup
hand pieced, applique, hand quilted
2. **MUSIC** (Garland)
original design: Hail to the Victors
machine embroidery, applique, hand quilted
3. **ANTIQUES** (Marilyn)
original design: Old Antique Shoppe
Machine pieced, applique, ink embellishment
4. **GARDEN** (Nancy A)
traditional design: Tulips
hand pieced and quilted
5. **QUILTING** (Susan and Sharon)
traditional design: Log Cabin adaptation
machine paper pieced, machine quilted
6. **PAINTING** (Marlene and Sue)
original design: Painting Together
hand pieced, applique, hand quilted
7. **BADMINTON** (Angie)
original design: Shuttlecocks
machine, hand pieced, applique, hand quilted
8. **SQUARE DANCE** (Nancy B)
traditional design: Follow the Leader
machine pieced, machine quilted
9. **HIKING** (April)
traditional design: Snail's Trail
machine pieced, hand quilted
10. **NEEDLECRAFT** (Gwen)
traditional design: Spools
machine pieced, hand and machine quilted
11. **SWIMMING** (Teri)
original design: Lap Time
machine pieced, hand and machine quilted
machine embroidery
12. **CAMPUS EXPLORERS** (Elisabeth)
traditional design: Mariner's Compass
hand and machine pieced, hand quilted
13. **BOOKS** (Jane)
original design: End to End
machine pieced, hand quilted
14. **BRIDGE** (Doris)
traditional design: Nine Patch adaptation
machine pieced, applique, hand quilted
15. **SPANISH CONVERSATION** (Nancy L)
original design, Ole
hand pieced, reverse applique, shadow quilting
16. **ADMINISTRATION** (Helen)
original design: Lines of Communication/
Red Tape
hand pieced, applique, hand quilted
17. **HOSPITALITY FOR WORLD VISITORS** (Sharon)
traditional design: Fan adaptation
Reaching Out
hand pieced, machine quilted
18. **MOMS & TOTS/PARENTING** (Nancy L)
original design: Who's Leading Whom?
machine pieced, applique, hand embroidery,
hand quilting
19. **FINANCE** (Annette)
original design: Money Matters
machine pieced, applique, hand quilted
20. **AROUND THE WORLD** (Garland, Alida, Kay)
traditional design: Trip Around the World
hand and machine pieced, hand quilted
21. **COOKING/FOODS** (Jeanne)
traditional design: Churn Dash
machine pieced, hand quilted
22. **FRENCH CONVERSATION** (Joan)
traditional design: French Star
hand pieced, hand quilted
23. **ART** (Carol and Sue)
original design: Four Triangles
machine pieced, quilted in the ditch
24. **THEATER/DRAMA** (Sue)
traditional design: adaptation Concorde Star
machine pieced, surface stitchery, hand quilted

On April 11, 1997, at a reception in the Michigan League, the completed quilt was given to the Faculty Women's Club Board of Directors who then presented the quilt to the Michigan League. The quilt now hangs in the Founders' Reading Room, its two year germination completed.

QUILTERS

Nancy Aupperle
Nancy V. Bishop
Susan Hickey
Barb Kilbourn
Angie Miller
Kay Outcalt
Joan Rutherford
Teri Teeri
Carol Wineman

Barbara Bach
Annette Hansen
Marlene Hubbard
Garland Lewis
Jeanne Müller
Marilyn Perry
Alida Silverman
Sue Ullrich
Sharon Woodcock

Helen Birdsall
Jean Harris
Jane Hughes
Nancy Livermore
Elisabeth Mürau
April Rossmann
Gwen Stevens
Doris Weintraub



BRIEFING

ANN ARBOR

UNIVERSITY OF MICHIGAN

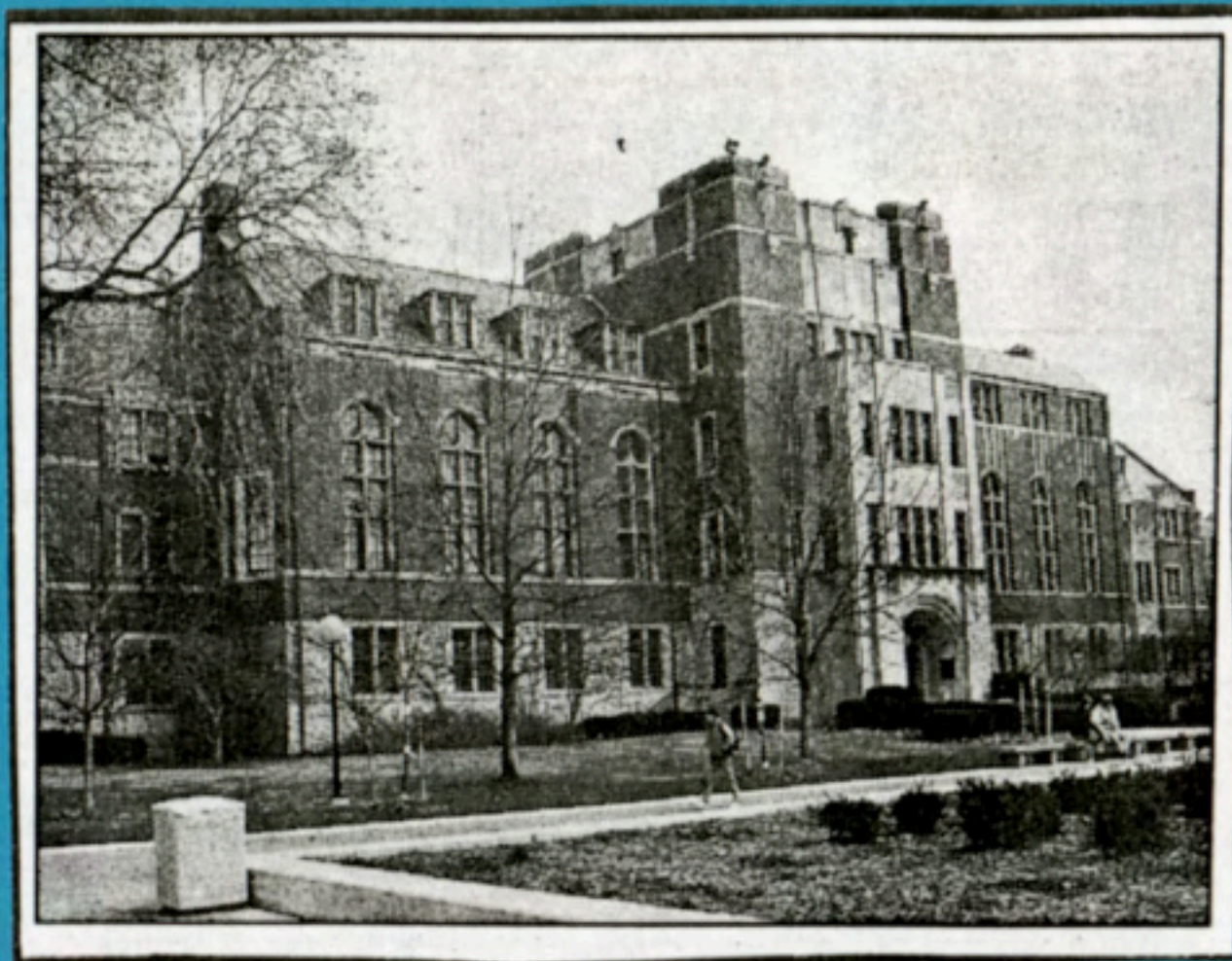
Faculty women's group dedicates quilt

The University of Michigan Faculty Women's Club will dedicate its 75th Anniversary Quilt 4 p.m. Friday in the Founder's Reading Room, Michigan League. Refreshments will be 3:30-5 p.m. Admission is free. Call 647-7463.



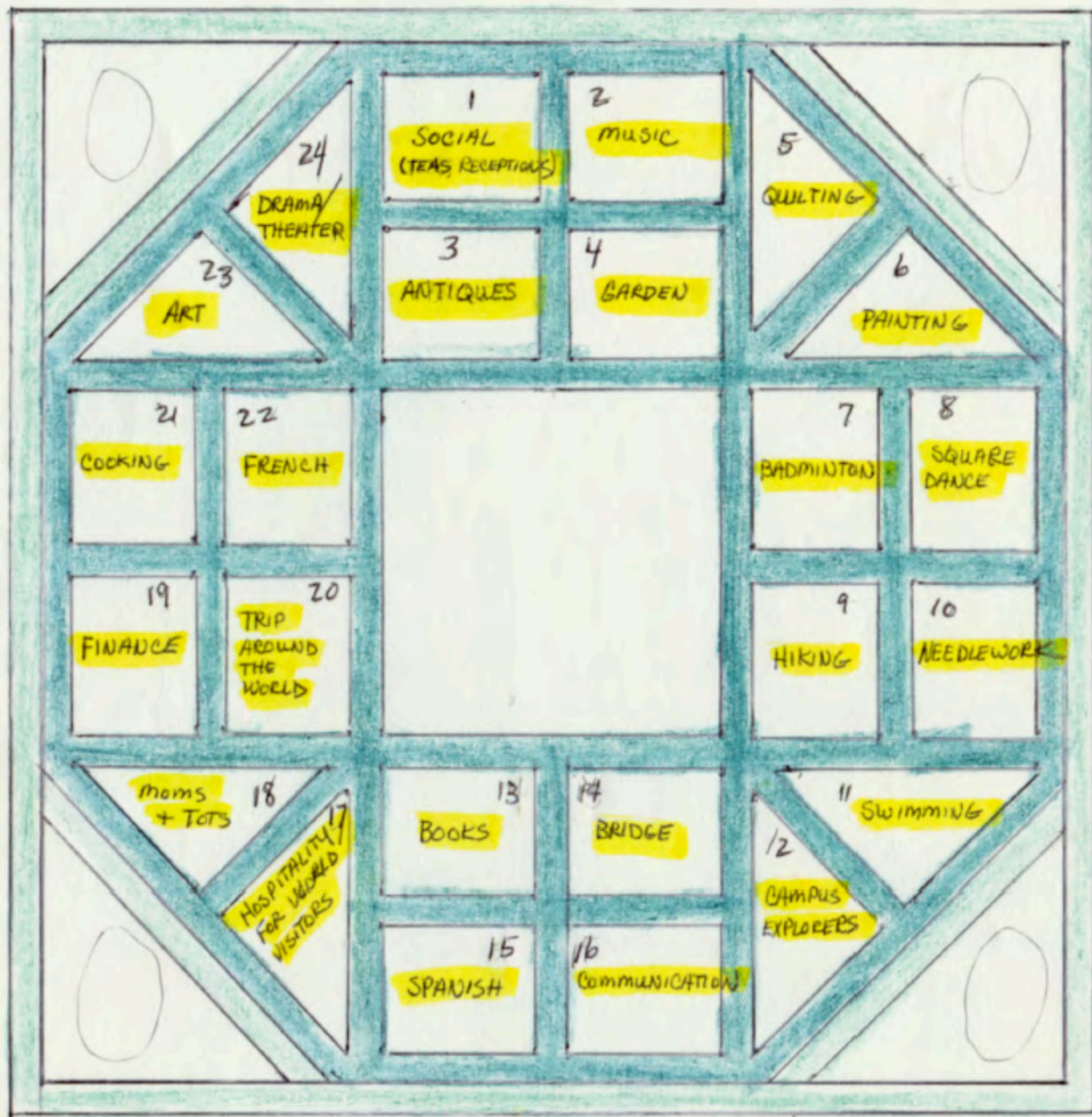






The Michigan
League was
built in 1929
for women
students.





FACULTY WOMEN'S CLUB 75TH ANNIVERSARY QUILT

This commemorative quilt celebrates the seventy-fifth year of the founding of the University of Michigan Faculty Women's Club whose mission is to promote acquaintance and fellowship among its members.

The quilt is six feet square in size, with an internal octagonal shape containing twenty-four segments depicting a representation of the Faculty Women's Club's past and present activities. The segments surround an area which is a "whole cloth" quilted view of the Michigan League, location of some of the FWC's first meetings and current large group activities. Michigan League and Faculty Women's Club logos occupy the outer triangles. Fabric was chosen to complement the color scheme of the Founders' Reading Room/Alcove, and the inner octagonal shape echoes the coved ceiling.

Members of the Quilting Section, one of the forty interest groups within the Faculty Women's Club, designed and constructed the quilt. Individual members chose a segment and then used either original or traditional patterns to depict with forethought and humor a specific club activity. Many construction techniques can be seen in this quilt: machine, hand and paper piecing; machine and hand quilting, applique and various types of embellishments.

Please do not touch the quilt.
Skin oils stain and damage the fabric.

The Quilting Section happily presents this little book to the FWC. Its pages tell the story in words and pictures of our 2 year labor of love creating a quilt in celebration of the FWC's 75th anniversary. This effort brought us challenges, but it also brought us the joy of working cooperatively together. We hope that the quilt will bring as much pleasure to those who view it in the future as its creation has brought to us.

April 11, 1997