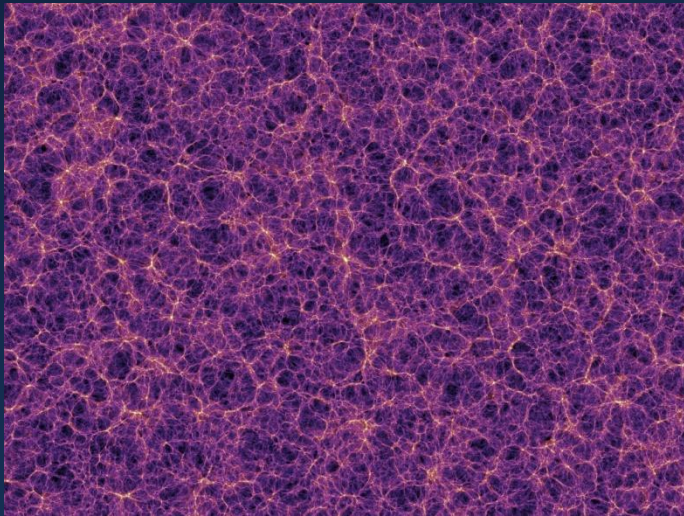


BOSS Calibration

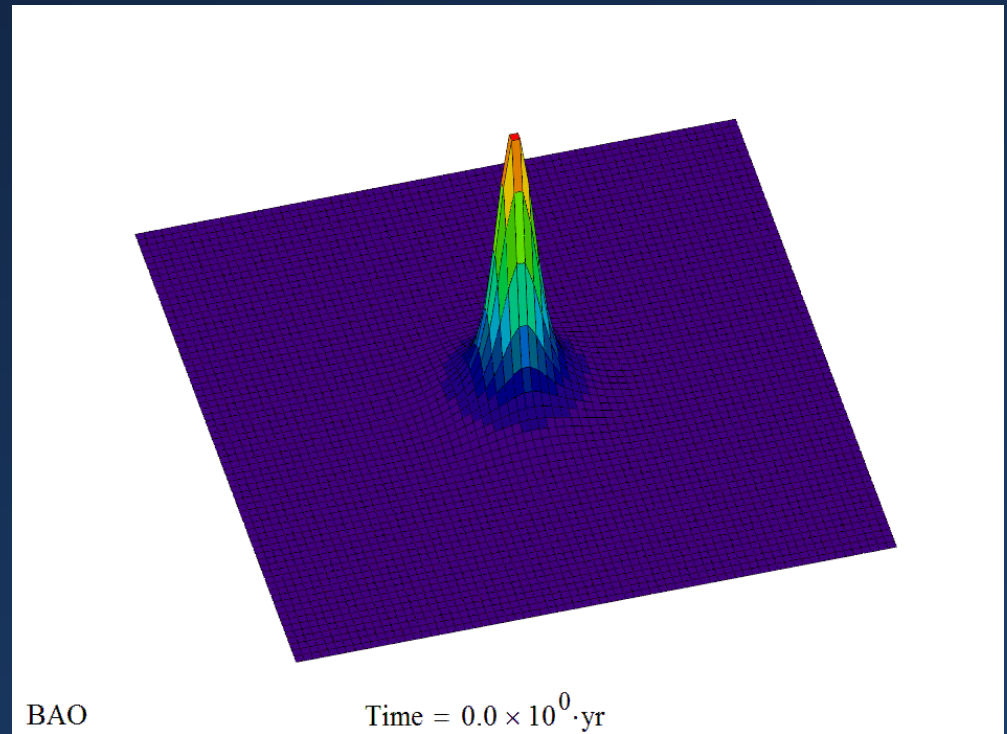
A Step Towards BigBOSS



Evan Losh, Advisor Greg Tarle
University of Michigan
REU Symposium 8/8/2012

BAO

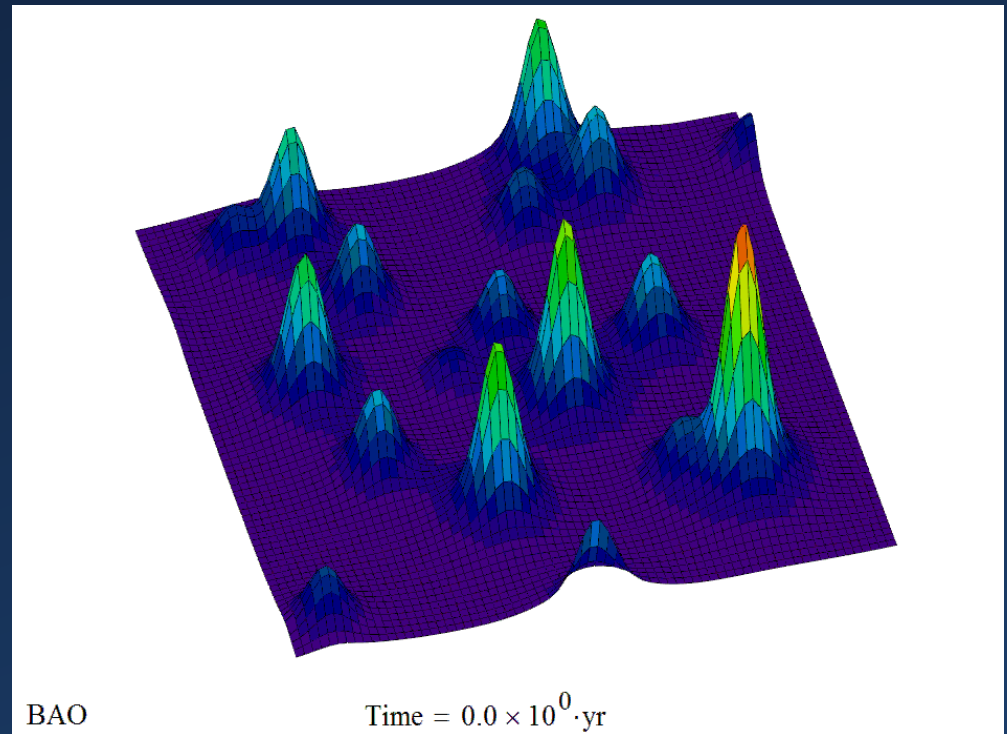
- Baryon Acoustic Oscillation
 - Shells of high density
 - Standard ruler
 - 100 Mpc scale
 - Map galaxies and quasars
 - DE information



One source

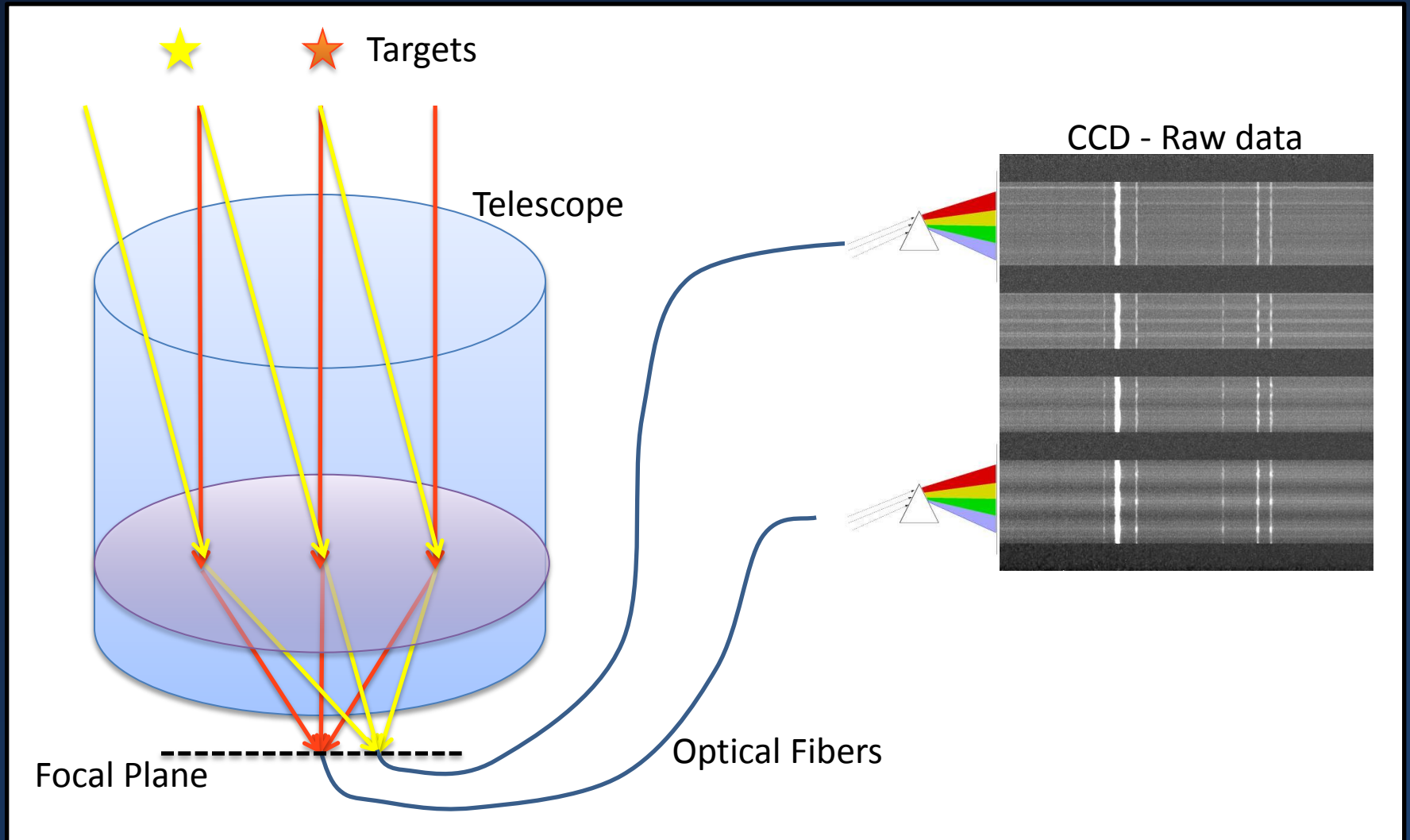
BAO

- Baryon Acoustic Oscillation
 - Shells of high density
 - Standard ruler
 - 100 Mpc scale
 - Map galaxies and quasars
 - DE information



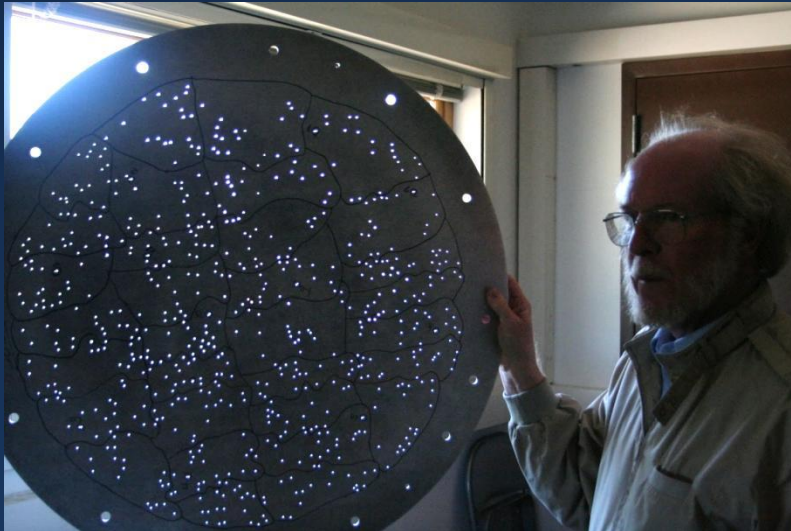
Many sources

Astronomical Spectroscopy



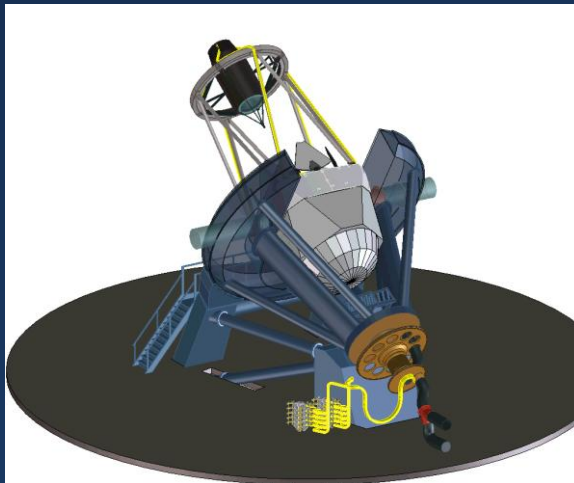
BOSS

- Baryon Oscillation Spectroscopic Survey
- Sloan Digital Sky Survey (SDSS) 2.5m telescope
- Room for Improvement
 - Plug plates
 - Too slow
 - Depth of field
 - Unstable



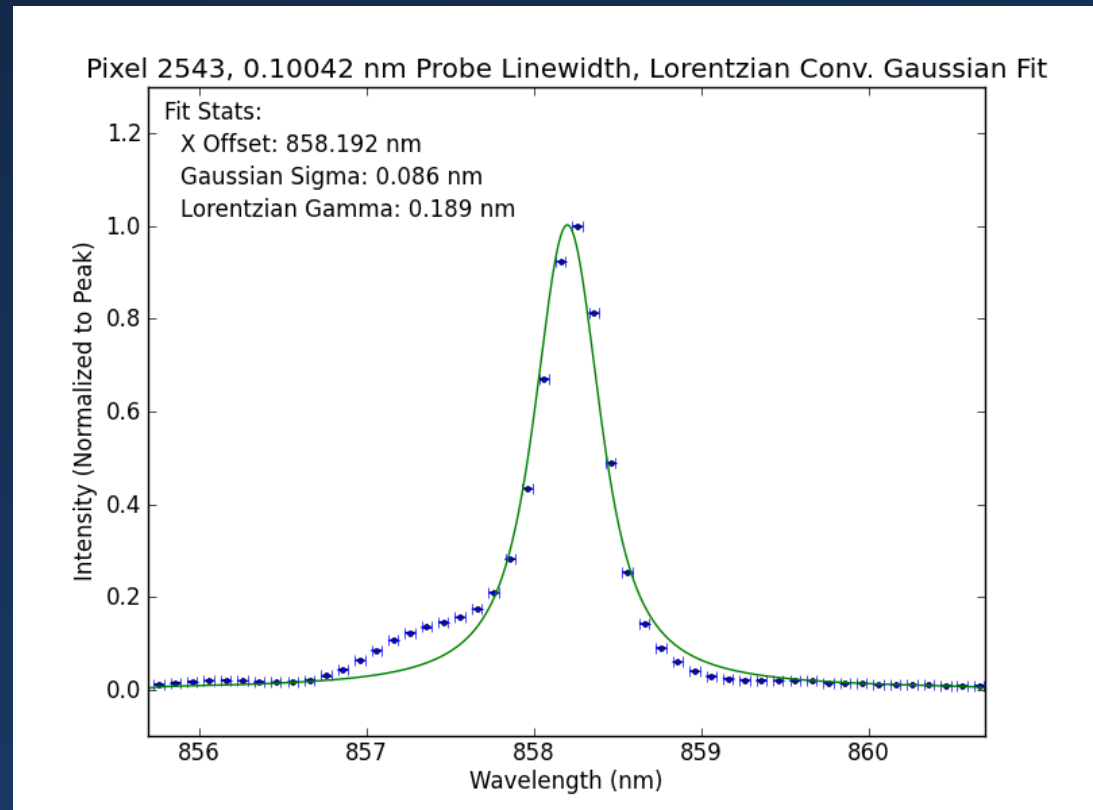
BigBOSS

- Mayall 4m Telescope
- Robotics
- More fibers
 - 5000 spectra/12 minutes
- Stable
- 5 years
 - 10 million spectra



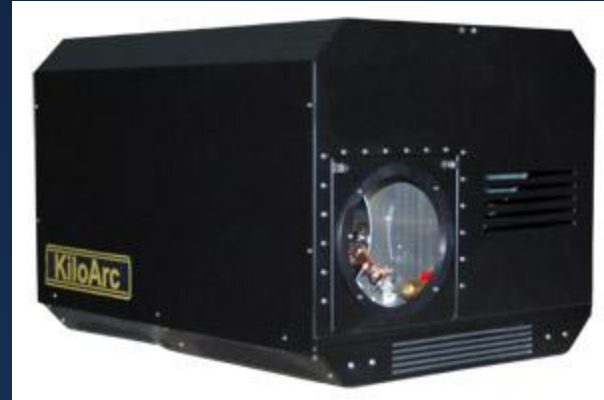
Calibration Goals

- Fiber Variations
- Response of each pixel to each wavelength
 - 340 nm to 1060 nm
 - 0.01 nm bandwidth
 - 0.01 nm increments
 - Absolute wavelengths to 0.1 pixel error
- Fast
- Current methods
 - Dome and sky flats
 - Arclamp



Calibration Method

- KiloArc
 - 1000 W Xe lamp
 - Lines
 - Fireball

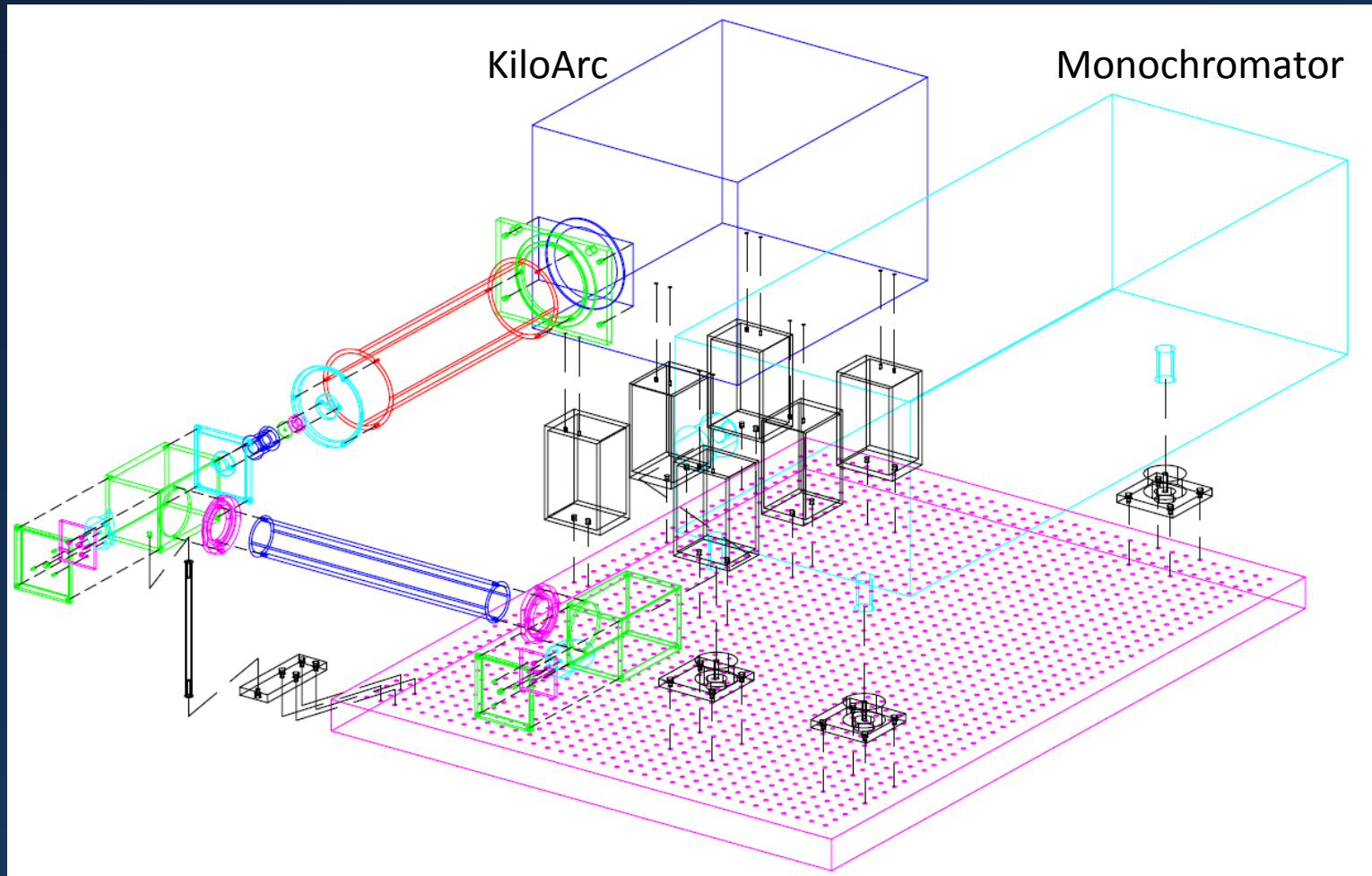


- Monochromator
 - Broadband input
 - 0.01 nm band output
 - High speed

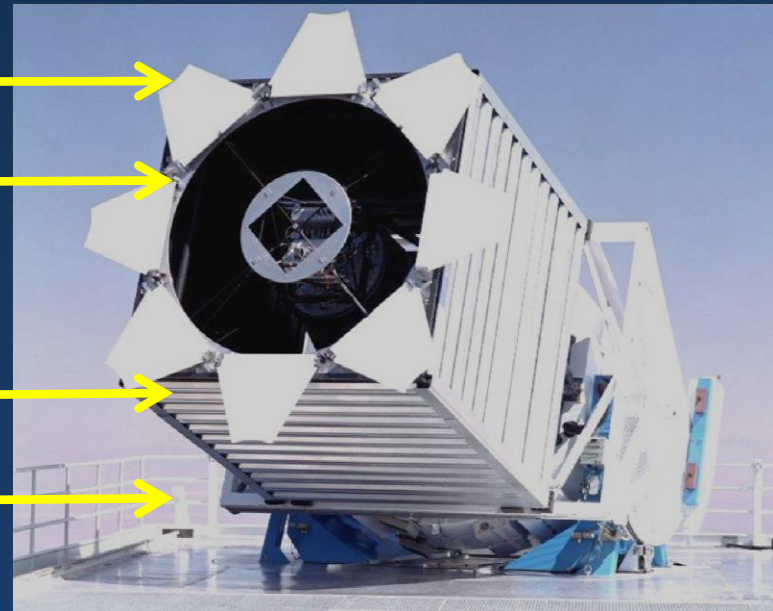
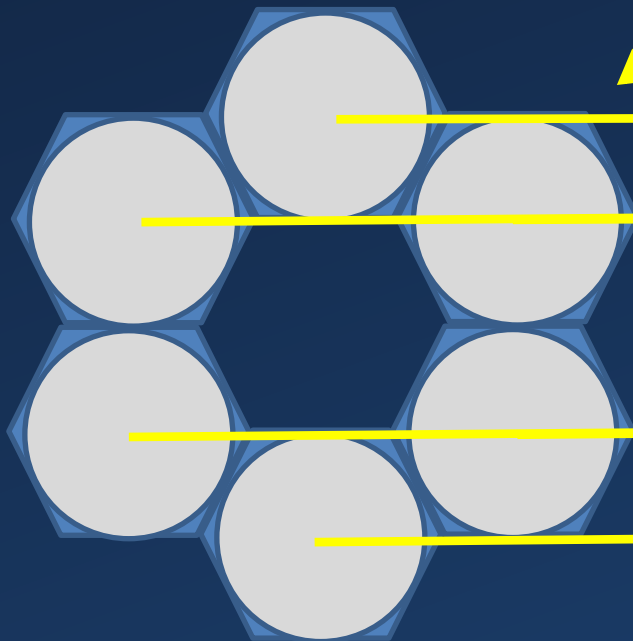
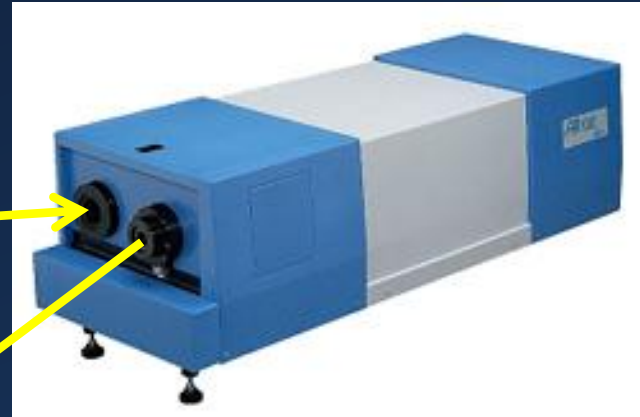
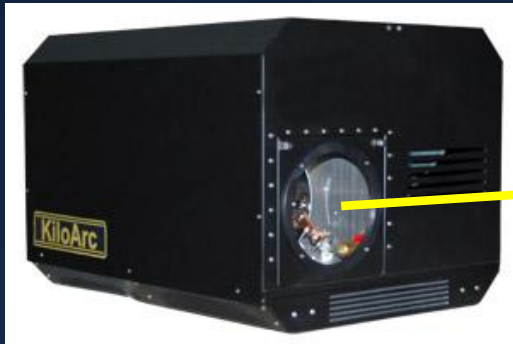


Calibration Method

- Monochromator Input optics

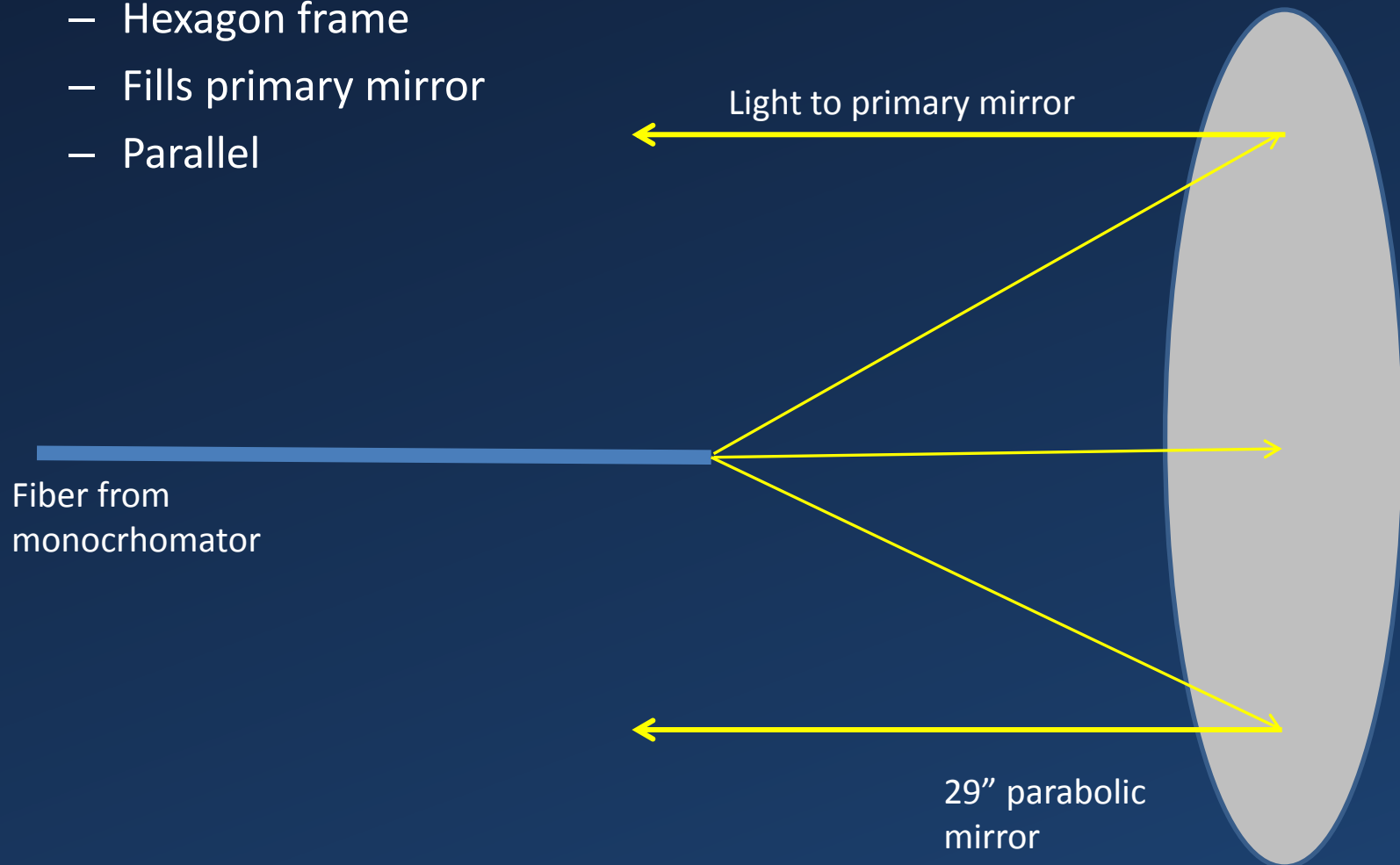


Calibration Method



Calibration Method

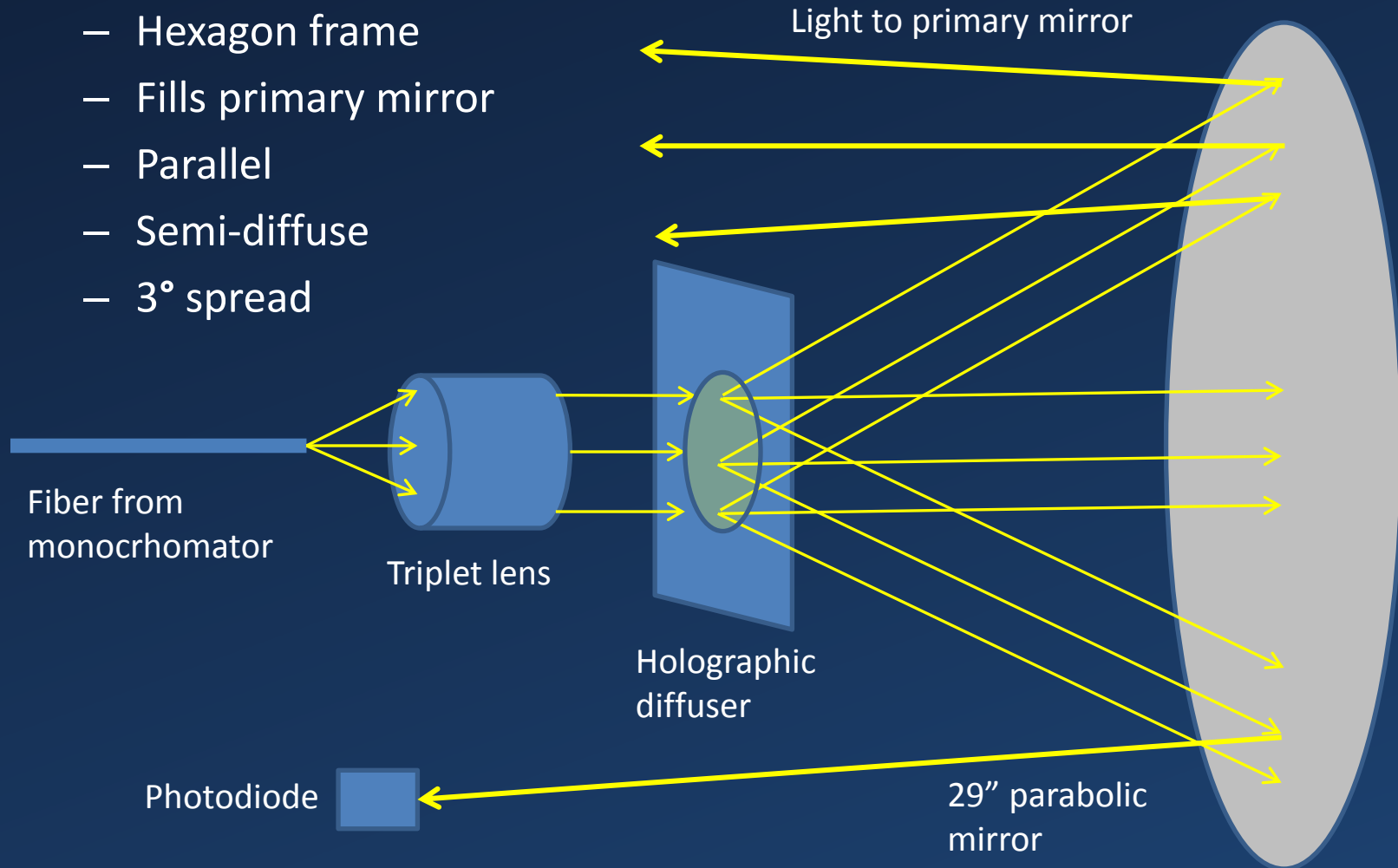
- Projector
 - Hexagon frame
 - Fills primary mirror
 - Parallel



Calibration Method

- Projector

- Hexagon frame
- Fills primary mirror
- Parallel
- Semi-diffuse
- 3° spread



Calibration Method

- Photodiode
 - Pixels illuminated at different times
 - Normalize power input
 - Light source varies
 - Fibers move

Near Future

- Assemble input optics and projector
 - Alignment
 - Apache Point, NM
 - Calibrate BOSS!
- Distant Future
 - Replace KiloArc with OPO
 - Add mirrors to projector
 - Calibrate BigBOSS!
- Questions

Neutrinos

- Uniform background mass
- Measure Σm_ν to 0.024 eV
- Resolve Hierarchy degeneracy?

